

A hand holding a fish against a teal background. The fish is held horizontally, and the hand is visible from the bottom. The background is a gradient of teal and light green.

nordicite

THÉÂTRE INCLINÉ AND NORDLAND VISUAL THEATRE COPRODUCTION

NORDICITÉ, WALKING ON THE CIRCLE

Two years ago José Babin, the artistic director of Théâtre Incliné, initiated an unusual adventure on the most northern territories of the globe. Always looking for human and artistic encounters and inspired by the notion of territory, she approached a Russian scientist, artists from Finland, Norway and Quebec and authors from eight countries touching the arctic polar circle. Inspired by her steps on the circle, a new cycle of creation was born: *Nordicité, walking on the circle*.



The show is part of a five year creation cycle *Nordicité, walking on the circle* (2015-2019), in collaboration with many artists from the North and consists of several expeditions in the northern territories, the production of two shows, short-movies made of filmed puppetry and shadows, short story writing and activities of artistic intermediation.

The North is multiple therefore each production carries its own feeling of the north, a perspective, from the most intimate to the very fictional. Each piece is independent from the other but brought together they create a whole, give meaning to the cycle and complete the picture.

Currently the whole production cycle of *Nordicité, walking on the circle* is being presented on an evolving web platform from which spectators are immersed in the adventure: theatreincline.ca/nordicite/eng

THE FIRST SHOW: NORDICITÉ

The first show of our Nordic cycle *NORDICITÉ*, is a quest. A wandering artist gives us an intimate testimony of her encounter with the North, and of her feeling of vertigo as she faces an immensity she cannot seize.

Visual poem where video projection, music, theater and dance move alongside one another; *Nordicité* is a journey within myths and realities, and a reflection on our capacity to understand the voices of the North.



ENCOUNTERING THE NORTH...

A few years ago, I went to teach in Nunavut. This is where I met the North, and I fell in love with it. So I walked the steps of the polar circle, I explored the land, I captured samples of humanity hoping to bring the voices of the North to the South. I met wonderful people and artists, the silence and the immensity. I wanted to show the North I had imagined, the one I had encountered. Magnificent. Out of reach. But projects are like relationships. Some leave you marks like frostbites on your heart. I love you North. Because you remain unattainable. Because I will never own you.

José Babin

A NORDIC CREATIVE TEAM MEETING IN NORWEGIAN TERRITORY

The artistic team was hosted for a six-week creation residency in the Nordland Visual Theatre in October and November 2016. In the north of the polar circle, at the heart of the Lofoten islands, surrounded by fjords and breathtaking mountains, a Norwegian artistic counsellor, a Finish video maker and five Quebecer artists have created the first version of the show in this spectacular place. More work was done in Quebec in January and February 2017 and the Canadian Premiere took place in march 2017.



JOSÉ BABIN - QUEBEC

Scriptwriter and stage director José is the Théâtre Incliné's artistic director. Both stage director and actress, she explores playwriting through the imagery of scenic writing, working on productions with or without words. Her artistic approach is based on stage writing that uses

"matter" to express feelings. She has developed a unique manipulation style that allies mime and puppetry. In her form of theater, part of the story being written comes from within the actors, through all of the visuals and sounds that interact with them. She is the initiator of this adventure.



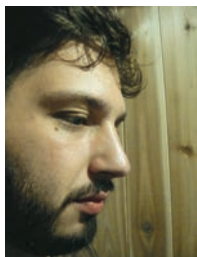
KALLE NIO – FINLAND

Set and video designer

Kalle is a visual artist and illusionist from Finland, founder of the WHS company that performs on major stages internationally. In his work he examines different kinds of expression possibilities provided by video image

and their capacities related to time and space. José has offered him to join the team after seeing his work in Helsinki and in Estonia. Set and video designer on the show, he brings his artistic vision through the research of poetic yet meaningful images; his contribution is extremely valuable.





GUIDO DEL FABBRO - QUÉBEC

Music Composer

Guido is a well-known artist of the Quebec musical scene. He regularly works as a music composer for the contemporary art scene. Guido has also collaborated as a musician, sound mixer and director of many artist albums such as Philippe B, Groenland, Forêt, Les Soeurs Boulay, Beast, Mara Tremblay, Philémon Cimon, Jérôme

Minière, Fanfare Pourpour and Pierre Lapointe. Two of his solo projects have been edited on the label Agrégats and on &records. He has been the invited composer at Pointe-à-Callière for the Port Symphony in 2014. This is his third collaboration with Théâtre Incliné. For *NORDICITÉ*, he created a rich and captivating sound environment inspired by the noise of the breaking ice in the north.



The dancers become mythical creatures inspired by the north.

« When I was a child, I loved geographical maps, especially the part at the top. I imagined that I could go around the globe jumping from one continent to the other.

*I wanted to bring back the voices of those who lived on the « upper part ».
To set up a blind date between the North and the South.
It was a very naïve idea. Crazy... »*

On top of those three artists, a team of talented creators, like beautiful migrating birds, have nourished the creation:

CREATIVE TEAM

Dramaturg: Pascal Brullemans

Translator: Mathilde Perallat

Artistic counsellor (Quebec): Francine Alepin

Cast: Mélanie Chouinard, Bryan Morneau and José Babin

Puppets, costumes and stage director assistant: Émilie Racine

Lights: Alexandra Dugal

Seamstress: Charline Guay

Set building: Atelier 303 and Alain Lavallée

Artistic counsellor (Norway): Bente Andersen

Scientific counsellor: Daria Schwalbe (Denmark)

Production director: Cynthia Bouchard-Gosselin and Alain Lavallée

Stage managers: Patrice Daigneault and Vincent Santes

Photos: Geneviève Therrien

The show is freely inspired from expeditions in the northern territories, from human encounters, from Kalle Nio's videos and from bits of short stories written by circumpolar authors:

Greenland: Pipaluk Lykke Løgstrup - Sweden: Rasmus Lindberg - Iceland: Kári Tulinius - Norway: Tale Næss Lysestøl - Finland: Maria Peura - Canada: Lucy Tulugarjuk - Russia: Alexander Seryakov - Alaska: Sean Asiqluq Topkok.

We wish to thank our partners the Cole Foundation and WJ. Jones.

Special thanks to Preben Faye-Schjøll, Geir-Ove Andersen, Jan Erik Skarby.



THE COMPANY - THÉÂTRE INCLINÉ

For twenty five years, the company has been looking for ways of building a contemporary form of theatre shows that are like visual poems. Théâtre Incliné explores new inspiring places while creating an original artistic form in which bodies, matter, sound and images each composes a detail of a picture in constant movement.

Each new project is rooted in a specific territory that inspires the creators and this time it is the earth as seen from above. José and Alain are the inquiring minds of Théâtre Incliné. They collaborate with artists from various cultures through international coproductions in France, Italy, Japan and now Scandinavia.

Geneviève Therrien is the administrative director and Mathilde Perallat is in charge of the company's development.

www.theatreincline.ca

A QUEBEC - NORWAY COPRODUCTION

NORDLAND VISUAL THEATRE (NVT) is the coproducer of the show. Located at the heart of the Lofoten islands, the NVT is an international creation center specialized in making visual theater through the use of puppets and animated forms. It supports worldwide famous artists of the contemporary visual theater scene.

www.figurteateret.no



*« Contrary to the South pole,
the North pole is not a land
It is an ice field floating on the ocean.
Its surface moves, cracks, separates
and reconnects in a constant drifting.
If you set foot on the North Pole,
the ice on which you have walked
will have disappeared, as of the next day.
It is a forever-ephemeral space. »*



nordicite

TECHNICAL INFORMATION

Audience: adult and adolescent
55 minutes
Performance space: 9,5 x 7 x 5,5 meters (h)
32 x 23 x 18 feet (h)
Touring staff: 6 people

Please contact us for the financial terms.

CONTACT

THÉÂTRE INCLINÉ
diffusion@theatreincline.ca / +1 450 682-7223
www.theatreincline.ca

THIS SHOW BENEFITS FROM CREATION RESIDENCIES IN
THE NORDLAND VISUAL THEATRE IN NORWAY (OCTOBER AND NOVEMBER 2016)
AND MAISON DES ARTS DE LAVAL IN QUEBEC (MARCH 2017)



Conseil des Arts
du Canada
Canada Council
for the Arts

